

INTERACTIVE DOCUMENTARY: ADOLESCENT SEXUAL BEHAVIOR THE IMPACT OF IT ON SOCIETY AND THEMSELVES

INTERACTIVE DOCUMENTARY FOR ADOLESCENT SEXUAL BEHAVIOR

Adzuan Izzudin Bin Isma Zaki
Malaysia Institute of Information Technology
50250, Wilayah Persekutuan Kuala Lumpur
Adzuan.isma@s.unikl.edu.my

Alia Binti Abd Rahman
Malaysia Institute of Information Technology
50250, Wilayah Persekutuan Kuala Lumpur
alia@unikl.edu.my

Abstract— Sex is an activity that is done by married couple for pleasure and or conceiving baby. But people nowadays also done it without being married and this included people aged as young as 13 years old. This documentary aims to find out why they are doing it at such young age. This study also aims to evaluate whether documentary is an effective medium in spreading awareness about the topic at hand. AGILE model was used for the research to ease the workflow.

Keywords—sex education; sexual behaviour; sexual diseases

I. INTRODUCTION

As the technology keep revolving, the basic needs such as food and shelter has new dependency on technology such as gadget and internet. This fast evolution have positive impact and also negative to the users. One of the negative impacts are the sexual crime – spreading illicit video, online sexual harassment etc. These crimes happened in the society in various ages. Dependency of sexual urges varies from individual to individual whether they can controlled it or not. There is no enough exposure in Malaysia about the sexual education module (sex ed.) as the students only learnt about the sex in general through the science and biology subjects. Sex itself is considered as a taboo topic in the society and that is one of the reason why the sex education is not commonly teaches in Malaysia.

Sex education is defined as teaching about human sexuality, including intimate relationships, human sexual anatomy, sexual reproduction, sexually transmitted infections, sexual activity, sexual orientation, gender identity, abstinence, contraception, and reproductive rights and responsibilities (Cora C. Breuner, 2016). We can't control what the teenagers discover through the internet where the information is overload. That is why it is important for the schoolteacher, parents and or health practitioner to play their role regarding the spreading of medical information (Darby H. McElderry, 2003)

The Objectives of this research are listed below:

- i. To expose our society to the importance of sexual education and its severity so that they know the seriousness of a problem when engaging any sexual activity outside of wedlock.
- ii. To develop a documentary that is easily digested by the teenagers and a documentary that conveys information about severity of engaging sexual activity out of wedlock to the audience.
- iii. To evaluate the efficiency of a documentary in spreading awareness to teenagers and whether it can leave impact on the audiences or not.

The priority target audience for this research are adolescent or teenager in the age range of 13 and 18. This is due to them being impressionable by their peers and because they are at their discovering stage. By having this interactive documentary and able to reach its target users, it would help spread awareness regarding the topic.

II. RELATED RESEARCH

Topic regarding sexual behavior most often than not, seldom discussed openly this is due to it being stigmatized as taboo topic by society. By developing this documentary, it hopes to break the stereotyping of this topic. According to Bill Nichols, documentary can address the real world that we lived on rather than fantasy because they are used to convey only facts (Nichols, 2017). Several literature reviews were done to gain more clarification regarding the topic and in order to produce a suitable documentary.

III. CASE STUDY

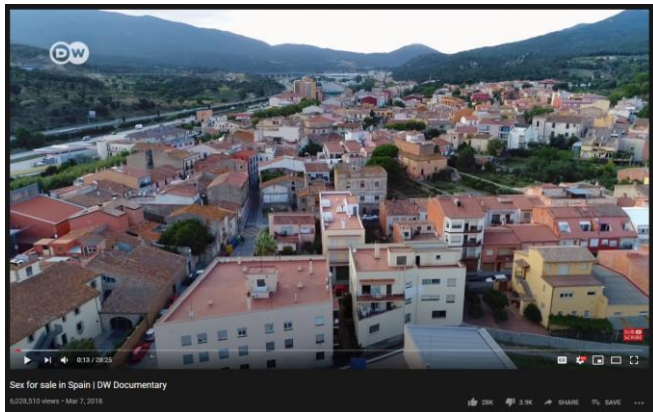


Figure 1. *Sex for sale documentary by DW Documentary on YouTube*

This documentary is about sexual worker in Spain, it explores the reason behind why the woman in the video is in that kind of industry, how they were exploited and manipulated during their younger year into doing this kind of job. The great thing about this documentary is that it gives the viewer first person view of what it is like in the sex worker industry, then the interview was done smoothly without the interviewee looking uncomfortable. But the not so good thing about it is the documentary was done in Spanish language without English subtitle and the audio were not balanced making the English narrator voice drowned out by the Spanish narrator voice.

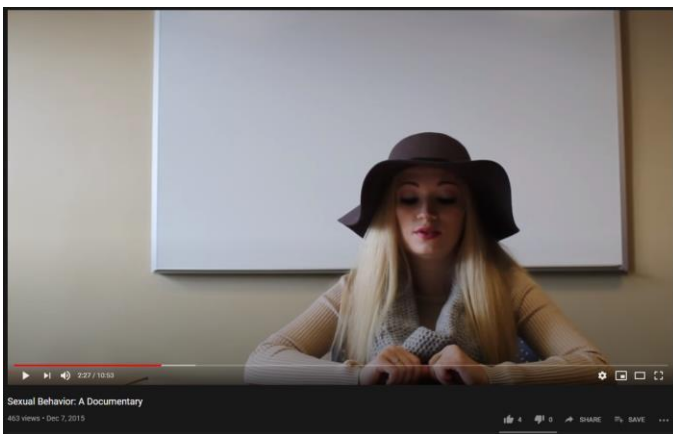


Figure 2. *Sexual behavior: A documentary on YouTube*

This documentary is about engaging sexual activity without protection, it talks about the danger of sexually transmitted disease that a person can get from unprotected sex activity. The great thing about this documentary is its camera angle and framing of the shot is good, then the interview was done seamlessly because the person in it is confident. But the not so good thing about it is despite good framing and angle, the quality of the footage itself is bad with the blurry and shakiness of the camera. Then audio was not audible making viewer experiencing hard time watching.

IV. RESEARCH METHODOLOGY

The research method that was used for this interactive documentary are AGILE model. AGILE models provide step by step process that the researcher will find easier to follow and abide to achieve the researches objective.



Figure 3. *AGILE model*

A. ANALYSIS

Planning phase is when a researcher identifies the problem and list it down to help smoothen the process of overall project. Setting the goal and objective for optimizing the product based on audience's reaction. This will help in completing the interactive documentary about sexual behavior among adolescents.

B. DESIGN

Designing phase is where the researcher starts designing flowchart and Gantt chart to streamline the process of producing the interactive documentary. This phase is also where researcher will design the layout of the documentary to suit the needs of target audience.

C. DEVELOPMENT

Development phase is where the developer will develop the interactive documentary to fulfill the requirement of research objective and its aim. Developer will be using Adobe Premiere Pro for the development process of the interactive documentary.

D. TEST

Testing phase is important to the developer, during this phase is when the developer will be testing the unfinished product to find any error or defects and can quickly fix the error. There are 2 phases during testing, which is alpha phase, and the latter is beta phase.

E. RELEASE

Developing phase is the second last phase is AGILE model, it is a phase where the product is

release into the market or to its target audience. For this interactive documentary, developer had decided to release it on public platform such as YouTube for easy access to target audience.

F. FEEDBACK

Final phase of AGILE model is feedback phase, during this phase developer will push out a survey form to the target audience and collect their feedbacks regarding the video so that the developer can improve the product.

V. PROTOTYPE AND PRODUCT DEVELOPMENT

During this phase, developer will look at the project as a whole and come up with a timeline of how and when to shoot the documentary. Beside timeline, developer will also seek out to book an appointment with interviewee for the interactive documentary. AGILE model is used as a guide for completing the project. Divided into 6 phases, planning, designing, developing, testing, releasing, and feedback, it is a perfect model for developing an interactive documentary and to keep improving the said documentary.

A. TIMELINE

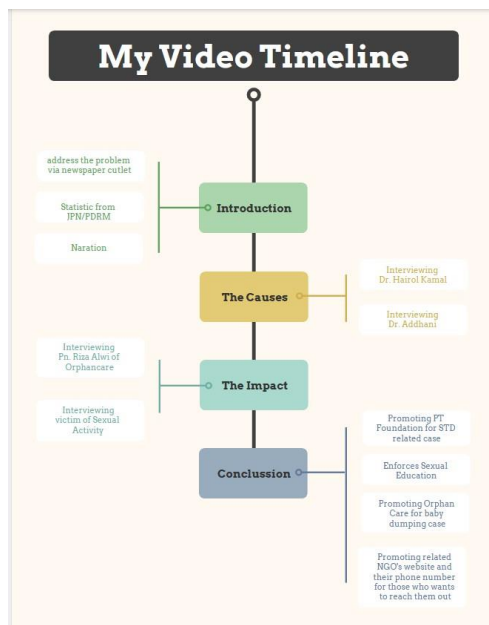


Figure 4. Timeline of the interactive

This is the timeline for the whole interactive documentary, it is divided into 4 section, introduction, the causes, the impact, and finally conclusion.

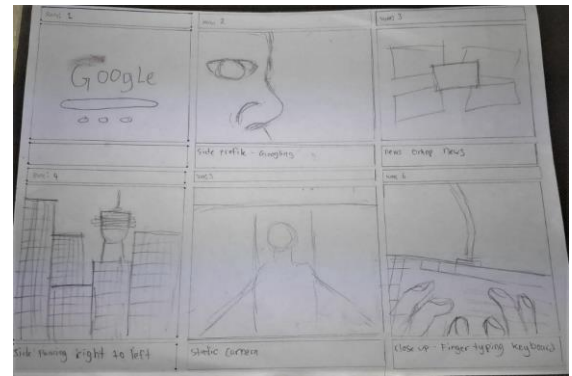


Figure 5. Rough storyboard sketch

This is the storyboard that the developer came up for the interactive documentary, developer use it as a reference point when shooting the documentary.

FYP DOCUMENTARY SCRIPT

DAY 1

Masalah seksual dikalangan remaja ini bukan lah sesuatu yang baru, malahan ia telah bertapak di dalam masyarakat kita sejak sekian lama.

Namun begitu sampai bilakah kita akan biarkan masalah ini terus membelenggu kita? Kita seharusnya membendung masalah seksual dikalangan remaja ini ketika mereka masih boleh dibimbing.

menurut statistik jabatan pendaftaran negara. Pada tahun 2017, hampir 5 ribu bayi telah dilahirkan oleh ibu bawah umur Dan terdapat 120 kes pembuangan bayi pada tahun itu.

memetik statistik Polis Diraja Malaysia (PDRM), sejumlah 911 bayi dibuang dari tahun 2010 sehingga Ogos 2018, di mana 585 daripada jumlah bayi tersebut dijumpai tidak bernyawa. *

Figure 6. Narration script

This is a part of the script that the developer used as a narration in the interactive documentary, it covers from introduction, the causes, the impact and finally the conclusion.

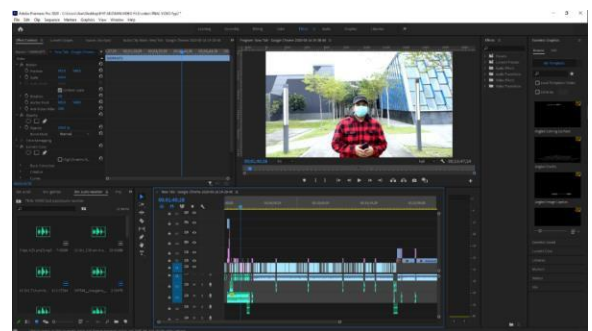


Figure 7. Timeline of the project in Adobe Premiere Pro

This is the timeline of the project that were developed using Adobe Premiere Pro, developer chooses Premiere Pro as editing software is because the interface is user friendly, and it can also do audio balancing directly without needing to use another software.

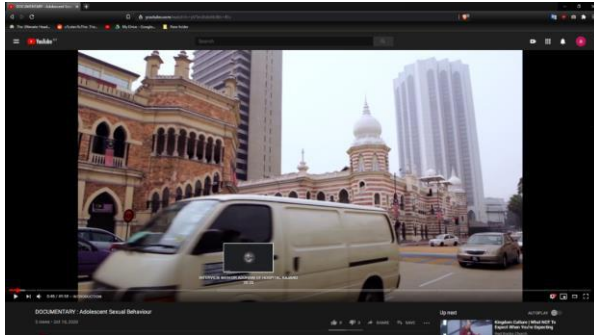


Figure 8. Testing the quality of the video by uploading it on YouTube

This is the testing phase where developer uploaded the documentary on YouTube to see the quality of the rendered video from Adobe Premiere. It is during this phase also where the developer will check whether the timestamp feature of YouTube function properly or not, or is the audio balanced or not.

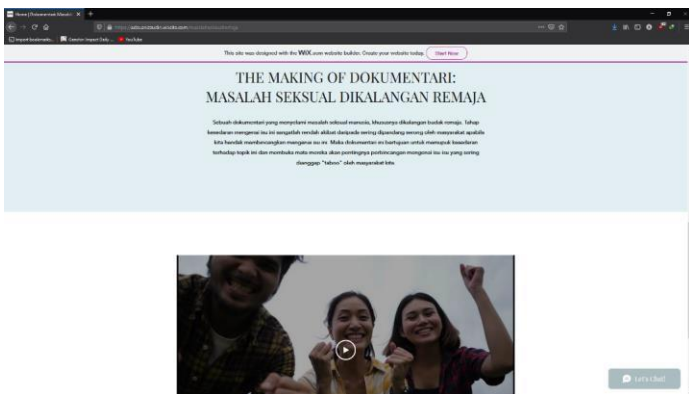


Figure 9. The documentary is released on YouTube and uploaded to a website.

This is the release phase from AGILE model, it is a phase where the developer will upload the whole interactive documentary on YouTube and then also uploading it onto a website dedicated to the topic.



Figure 10. Survey form using google form.

Final phase of AGILE model is feedback phase, it is during this phase that the developer will hand out survey form to the audience and collecting their feedback for improving the interactive documentary.

VI. TESTING & RESULT

A test was carried out to determine the effectiveness of the developed interactive documentary. Due to covid-19, the test was done using google form. The priority target for this research is adolescent group age ranging from 13-18 years old but there is also another 2 group of age, 19-26 years old and 27-32 years old. The reason for that is developer want to test whether documentary is an effective medium for educating the masses about topic that is heavily sensitive like this.

A. DEMOGRAPHIC QUESTIONNAIRE

i. Gender

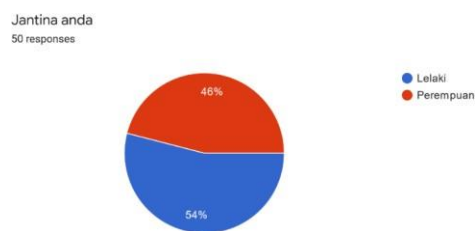


Figure 11. Gender.

Figure 11 shows the result of the first question in the questionnaire, it asks the gender of the 50 respondent that had answered the survey and according to the chart 54% is male while 46% is female.

ii. Age

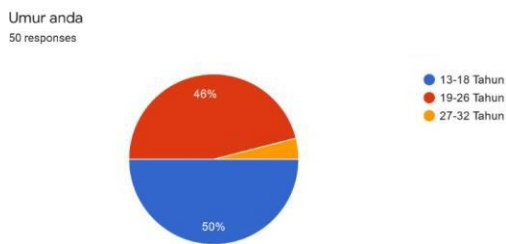


Figure 12. Age.

Figure 12 shows the result of the second question in the questionnaire, it asks the age of the 50 respondent that had answered the survey and according to the chart 50% is group 13-18 years old, 46% is group 19-26 years old and finally 4% is 27-32 years old.

VII. USER EXPERIENCE QUESTIONNAIRE

i. Content Acknowledgement

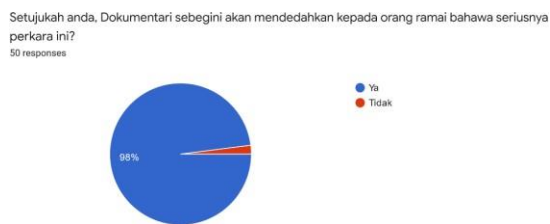


Figure 13. Content acknowledgement

Figure 13 shows the result of the content acknowledgement from the questionnaire, it asks whether the respondent agree that this documentary will help in exposing to society about the seriousness of the topic. 98% agrees while 2% disagrees.



Figure 14. Content acknowledgement

Figure 14 shows the result of the content acknowledgement from the questionnaire, it asks the respondent whether this interactive documentary is relevant or not in educating the

society about sexual related topic. 74% answered really relevant, 18% answered quite relevant while 8% is neutral about it.

Adakah anda faham isi kandungan yang cuba disampaikan dari sesi temu ramah didalam Dokumentari ini?
50 responses

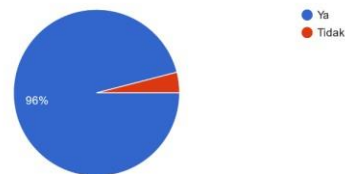


Figure 15. Content acknowledgement

Figure 15 shows the result of the content acknowledgement from the questionnaire, it asks whether the respondent understood the point from interview content that is in this documentary. 96% agrees with yes while 4% disagrees with no.

ii. Technical Acknowledgement

Apakah penggunaan Bahasa Melayu membantu anda lebih memahami maklumat yang disampaikan?
50 responses

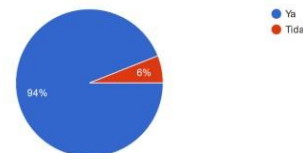


Figure 16. Technical acknowledgement

Figure 16 shows the result of the technical acknowledgement of the documentary from the questionnaire, it asks whether the respondent agrees that the usage of Bahasa Malaya in the documentary help them understand the documentary better. 94% agrees with yes while 6% disagrees with no.

Adakah anda rasa Dokumentari merupakan medium yang efektif dalam mendidik masyarakat akan Topik-topik sebegini?
50 responses

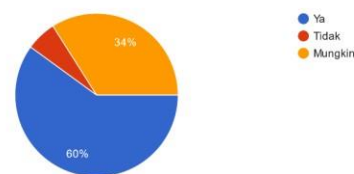


Figure 17. Technical acknowledgement

VIII. CONCLUSION AND RECOMMENDATION

CONCLUSION

After doing test and survey on 50 respondents, researcher had concluded that interactive documentary can be an effective medium for educating and spreading information

to its audience. If done correctly, it can grab the attention of the audience and keep them focus on the content of the documentary. The purpose of developing this project is to highlight the issue of sexual behavior of teenager, it is a sensitive topic to be discuss openly hence why this interactive documentary is developed. It is do try and break the stigmatization that is surrounding the topic. By developing this documentary, developer hoped that it can spark an open discussion amongst society regarding the topic and may helped those who are in the same problem as they are. AGILE model really helped developer to streamline the whole process of developing this interactive documentary, its step-by-step phases help developer to stay organized and on scheduled during the whole process.

FUTURE RECOMMENDATION

This documentary is a first step in the right direction for creating an educational documentary that is centered on teenager but at the same time is able to be enjoy by other people. Most respondent agree that developer should add a subtitle in the video, although the video is already in Bahasa Malaya, it is good to have a subtitle to accompany it so that viewer can understand the video more, this includes Bahasa and English subtitle. Besides subtitle, respondent also agrees that the duration of the video should be shorten and the pacing of the video should be faster in order for them to keep their focus watching it.

REFERENCES

- [1] Banister, B. V. (2016). How to Write a Literature Review Paper?
- [2] Cambridge. (2020). Cambridge Dictionaries.
- [3] Cora C. Breuner, G. M. (2016). *Sexuality Education for Children and Adolescence*. American academy of Pediatrics.
- [4] Curtis, A. C. (2015). Journal Of Adolescent And Family Health.
- [5] Darby H. McElderry, H. A. (2003). Sex Education in the Schools: What Role Does it.
- [6] Debra K Braun-Courville, M. R. (2009). Exposure to sexually explicit Web sites and adolescent sexual attitudes and behaviors.
- [7] Hasnan, H. A. (2018, october 22nd). Astro Awani. Retrieved from Astroawani.com:<https://www.astroawani.com/berita-malaysia/4000-remaja-bawah-18-tahun-hamil-setahun-188916>
- [8] Kabadayi, L. (2012). The role of short film in education.
- [9] Kumar, G. (2012). Impact of Agile Methodology on Software Development Process. software engineering life cycle model, 46.
- [10] Nichols, B. (2017). Introduction to Documentary, Third Edition. indiana, USA: Indiana University Press.
- [11] Sinar Harian. (2019, March 4th). Sinar Harian. Retrieved from SinarHarian.com.my:<https://www.sinarharian.com.my/article/16145/INFOGRAFIK/Statistik-remaja-hamil>
- [12] WORLD HEALTH ORGANIZATION. (n.d.). WORLD HEALTH ORGANIZATION. Retrieved from who.int: https://www.who.int/reproductivehealth/topics/sexual_health/sh_definitions/en/